

## Theme 1 Children, Young People and Families

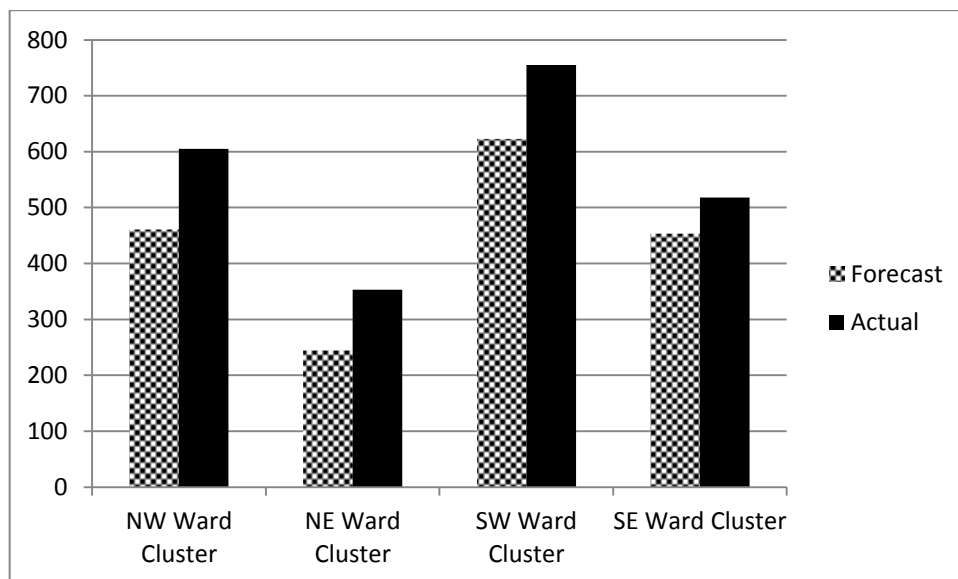
### MSG Programme Period 10 (Jan-Mar 2018) Performance Report

**Theme 1 – Children, Young People & Families:** This theme focuses on seeking the following key outcomes:

- Improved levels of participation, educational attainment and progression for children and young people.
- Children and young people are protected from harm and families are supported to provide a safe environment.
- Harmful relationships among peer/gender groups are reduced.
- Improved physical (such as reduced levels of obesity) and emotional health and wellbeing in children and young people.
- Reduced levels of substance misuse and sexual abuse, violent crime (including domestic violence) and anti-social behaviour.

### Geographical Breakdown

The table below shows the number of beneficiaries supported during the period January to March 2018 by Ward Cluster:



NW Ward Cluster	NE Ward Cluster	SW Ward Cluster	SE Ward Cluster
<ul style="list-style-type: none"> <li>• Bethnal Green</li> <li>• Spitalfields &amp; Banglatown</li> <li>• St Peter's</li> <li>• Weavers</li> </ul>	<ul style="list-style-type: none"> <li>• Bow East</li> <li>• Bow West</li> <li>• Bromley North</li> <li>• Bromley South</li> <li>• Mile End</li> </ul>	<ul style="list-style-type: none"> <li>• Shadwell</li> <li>• St Dunstons</li> <li>• St Katherine's &amp; Wapping</li> <li>• Stepney Green</li> <li>• Whitechapel</li> </ul>	<ul style="list-style-type: none"> <li>• Blackwall &amp; Cubitt Town</li> <li>• Canary Wharf</li> <li>• Island Gardens</li> <li>• Lansbury</li> <li>• Limehouse</li> <li>• Poplar</li> </ul>

### Raising Attainment Project Portfolio – Children’s Services

No. of live projects – Jan-Mar 2018	No. of projects classed as <b>GREEN</b>	No. of projects classed as <b>AMBER</b>	No. of projects classed as <b>RED</b>
9	9	0	0

There are 9 projects in this category; all are classed as ‘Green’ and meeting the agreed expenditure targets, service outputs and outcomes as indicated in monitoring reports and case studies received. All projects are working closely with schools and parents to provide reciprocal feedback on their young students. Officers will continue to work with organisations to ensure quality driven provision.

### Vulnerable & Excluded Families Project Portfolio – Children’s Services

No. of live projects – Jan-Mar 2018	No. of projects classed as <b>GREEN</b>	No. of projects classed as <b>AMBER</b>	No. of projects classed as <b>RED</b>
6	6	0	0

There are 6 projects in this category; all are classed as ‘Green’ and are on course to meet the agreed expenditure targets, service outputs and outcomes as indicated in monitoring reports received.

### Community Languages Project Portfolio – Children’s Services

No. of live projects – Jan-Mar 2018	No. of projects classed as <b>GREEN</b>	No. of projects classed as <b>AMBER</b>	No. of projects classed as <b>RED</b>
10	9	0	1

There are 10 projects in this category; 8 of which are classed as ‘Green’ and are on course to meet the agreed expenditure targets, service outputs and outcomes as indicated in monitoring reports received.

1 project classed as Red:

#### Teviot British Bangladeshi Association – Opportunity

The organisation has failed to submit monitoring returns for periods 9 and 10 of the MSG programme which has led to a Red rating. Monitoring officers have met with the organisation, most recently on the 5th July 2018 to explore ways to resolve some of the issues that exist. Late monitoring was due to difficulties obtaining information to complete financial and output monitoring.

### Youth Services Project Portfolio – Children’s Services

No. of live projects – Jan-Mar 2018	No. of projects classed as <b>GREEN</b>	No. of projects classed as <b>AMBER</b>	No. of projects classed as <b>RED</b>
16	15	1	0

There are 16 projects in this category; 15 of which are classed as ‘Green’ and are on course to meet the agreed expenditure targets, service outputs and outcomes as indicated in monitoring reports received.

1 project is classed as Amber:

#### **Shadwell Basin Outdoor Activity Centre - Girls Can Adventure**

The project has been rated amber, as not monitoring report has been received for this period. However, it was flagged by the project that there would be an issue this period in submitting a return.

Nevertheless, the project is on target to achieving its outcomes and outputs.

Due to the level of award this project requires annual monitoring visits.

### Sports Project Portfolio – Children’s Services

No. of live projects – Jan-Mar 2018	No. of projects classed as <b>GREEN</b>	No. of projects classed as <b>AMBER</b>	No. of projects classed as <b>RED</b>
6	4	0	2

There are 6 active projects in this category; 4 of which are classed as ‘Green’ and are on course to meet the agreed expenditure targets, service outputs and outcomes as indicated in monitoring reports received.

2 projects are classed as Red:

#### **Tower Hamlets Youth Sports Foundation – Hub Club Programme**

At the time of writing no monitoring report has been received for the period so performance of the project cannot be satisfactorily determined. Officers continue to work with the group to resolve all issues.

#### **Tower Hamlets Youth Sports Foundation – Stepping Stones Programme**

At the time of writing no monitoring report has been received for the period so performance of the project cannot be satisfactorily determined. Officers continue to work with the group to resolve all issues.

**Culture Project Portfolio – Children's Services**

No. of live projects – Jan-Mar 2018	No. of projects classed as <b>GREEN</b>	No. of projects classed as <b>AMBER</b>	No. of projects classed as <b>RED</b>
8	8	0	0

There are 8 active projects in this category; all are classed as 'Green' and are on course to meet the agreed expenditure targets, service outputs and outcomes as indicated in monitoring reports received.